

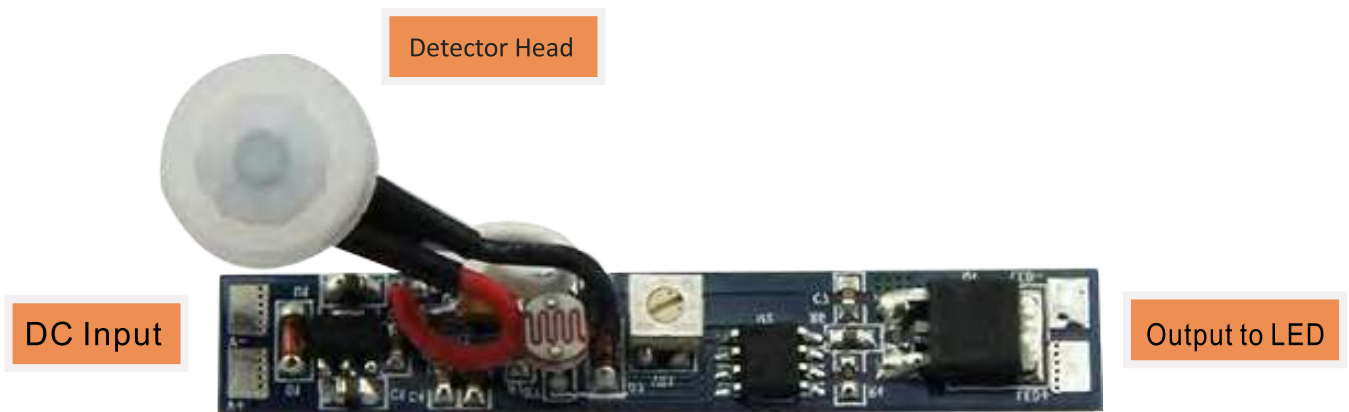
Motion sensor with Light Sensor Switch (model LD1051360)

Description	Dimension	Voltage	Load
Motion sensor with light Sensor switch	10mm x 57mm	12-24VDC	Max. 8 Amps.

Function:

Motion sensor with light Sensor Switch LSS002 is to be assembled into lighting fixtures. It would turn off the light at day time and turn on the light automatically when human pass within 2 meter at night. The lighting fixture equipped with LSS002 will stay on if the human body stays within detection range (2 meters) from the sensor at night and will turn off in 40 seconds after human body move away more than 2 meters at night .

Light sensor switch adjustable range: 2-60 lux

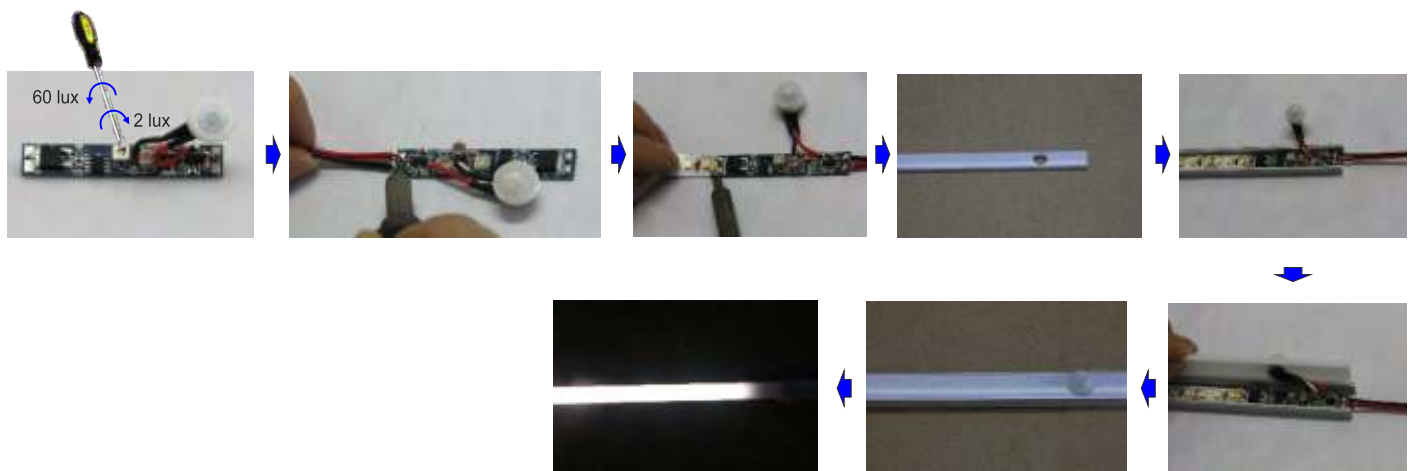


Installation Instructions:

Step I: Cut a 10.5mm hole at the fixture

Step II: Put the Detector Head into the 10.5mm hole

Step III: connect wires to the input end and output end of the control PCB.



Note: The function/program can be customized made upon different needs, such as longer time for stay on, etc.