

Mi • Light[®]

User Instruction

Mini WiFi LED Strip Controller

Model No.: YL1S / YL2S

Please read the instructions carefully before using the controller.

1. Features

The Mini WiFi controller is adopted by the most advanced PWM control technology, and has memory function(The light status will keep same as the status before you turn off the light); It can be controlled by the "Mi-light Cloud" APP via WiFi or 4G network. Support IR remote control and Amazon Echo voice control



Support Amazon Alexa Voice Control



WiFi Wireless Control



Smart phone App control



Support IR remote control



RGB colors to choose



Dimmable Saturation control



Timing ON/OFF the lights



Group control randomly by APP



16 Color Changing modes

2. Parameters

Mini RGB WiFi LED Controller

Model No.: YL1S

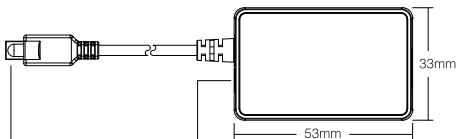
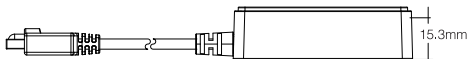
Working Voltage: DC12 ~ 24V (5.5*2.1mm) ⊖ ⊕ ⊕

Output Current: Max.4A

Working Temperature: -20~60°C

Communication Mode: WiFi-IEEE 802.11b/g/n 2.4GHz
or IR

G.W.: 20g

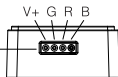


IR Receiver

Input DC12~24V (5.5*2.1mm) ⊖ ⊕ ⊕



Output Current: Max.4A



Pointer distance
2.54mm

Mini RGBW WiFi LED Controller

Model No.: YL2S

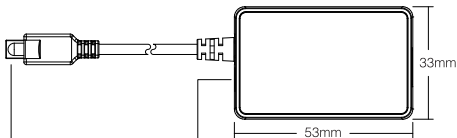
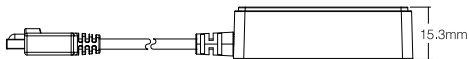
Working Voltage: DC12 ~ 24V (5.5*2.1mm) ⊖ ⊕ ⊕

Output Current: Max.4A

Working Temperature: -20~60°C

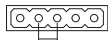
Communication Mode: WiFi-IEEE 802.11b/g/n 2.4GHz
or IR

G.W.: 20g



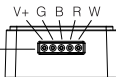
IR Receiver

Input DC12~24V (5.5*2.1mm) ⊖ ⊕ ⊕



Pointer distance
2.54mm

Output Current: Max.4A

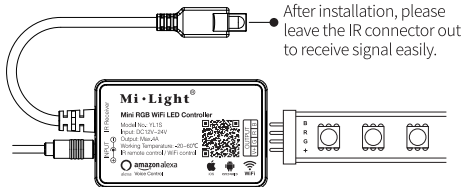


4. Connect to LED strip diagram

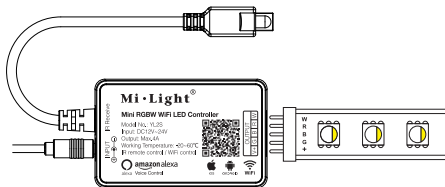


Controller input voltage must be in accordance with the required voltage of LED Strips.

(YL1S) Mini RGB WiFi LED Strip Controller

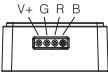
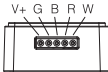


(YL2S) Mini RGBW WiFi LED Strip Controller




Instructions of setting output port rank

1. Connect the Mini WiFi controller to the power supply, then short press "OFF" key on remote-controller. To turn off the light.
2. Hold the "W" key on the remote-controller for 5s until the white light of the strip light flashing fast(It will exit automatically if there is no operation after 15s.)
3. Short press FLASH, STROBE,FADE,SMOOTH key to choose the corresponding strip light sequencing(Referencing the table below)
4. Set successfully (The white light of the strip light flashing fast for 1 second, then exits and enters the normal working mode).

Setting key	 RGB Controller	 RGBW Controller
FLASH	GRB(Default)	GBRW(Default)
STROBE	BRG	GRBW
FADE	RGB	RGBW
SMOOTH	GBR	WRGB

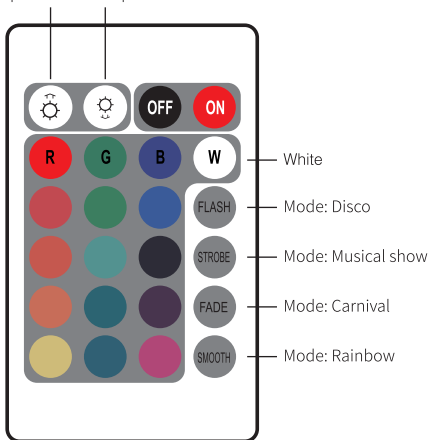
5. Compatible with IR remote controller

 Under dynamic mode, press this button to accelerate the jump speed.

 Under dynamic mode, press this button to lower the jump speed.

Brightness+
/ Speed+

Brightness-
/ Speed-



Attention

1. Please check whether the input voltage of the constant voltage power supply is in accordance with the controller, and please check the connection of both the cathode and anode.
2. The working Voltage is DC12~24V, the controller will be broken if the voltage is higher than 24V.
3. Non-professional user cannot dismantle the controller directly, otherwise, it may cause fire and electric shock.
4. The working temperature is -20-60°C; Do not use the device to direct sunlight, moist and other high temperature area.
5. Please do not use controller around the mental area and high magnetic field, otherwise, it will badly affect the control distance.



Made in China

Mi-Light Cloud APP

User Instruction

1 APP Downloading

For IOS System: Pls search "Mi-Light Cloud" on APP store.
(Above IOS9.0)

For Android System: search "Mi-Light Cloud" on Google Play
(Above Android 5.0) or Scan below QR-code to download APP.

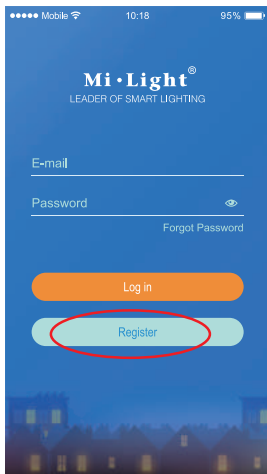


Scan QR Code to Install APP



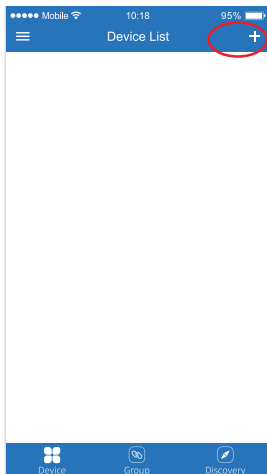
2 Register Mi-Light Cloud Account

Open APP and click Register button; Complete the register and log in.



3 Add Device

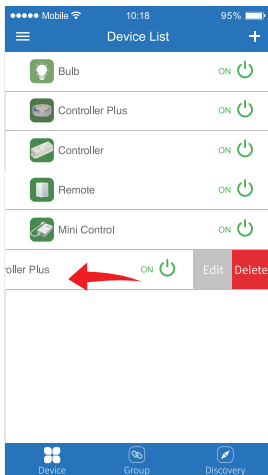
1. Click the right top "+" on the device list.
2. Please select the device type you will add, then complete the adding according to the hint of APP.
3. Back to device list after adding successfully, then pull down refresh in list to get the device status.





4 Modify device name or delete device

Slide device list to left, click " **Edit** " to modify device name; click " **Delete** " to delete device.

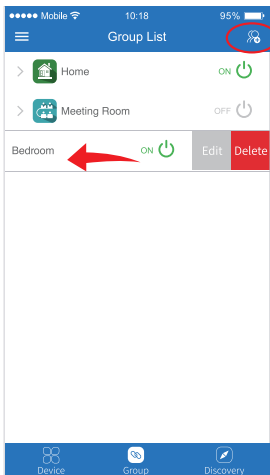
Note: If the device was shared to others, then the device will also be deleted on your friends' device list.



5 Group Control

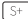



1. Click  to switch to Group list, then click the right top  icon on the Group list to create groups.
2. Slide the Group list to left to **Edit/Delete** groups.

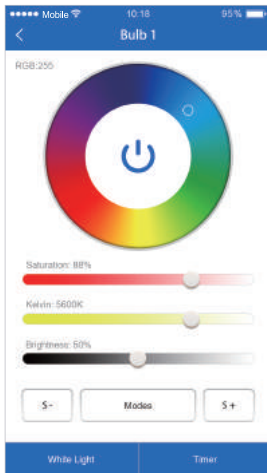
Note: The group just work on APP Controlling, cannot work on Voice control. Please open Amazon APP for Group Voice control.



6 APP Control

Click the device or group that you want to dim on device list and group list into Dimming Interface.

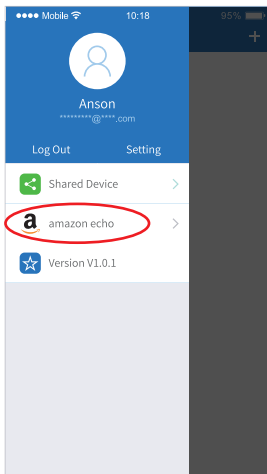
-  Click speed+ under dynamic mode.
-  Click speed- under dynamic mode.
-  Sunset mode: Gradually OFF within 10 minutes.
-  Good night mode: Gradually OFF within 1 minute.



7 Amazon echo Voice Control

Click left top "☰" icon on the home page

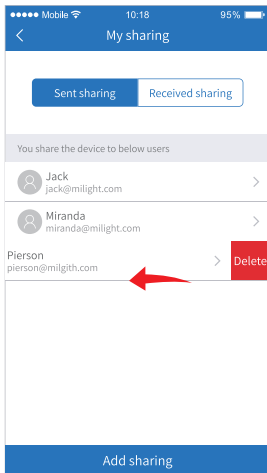
Then click "amazon echo" to check detailed instructions



8 Sharing Device

Share the device to friends, Let your friends can control this device.

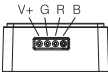

1. Click the left top "☰" icon on the home page.
2. Click "🔒 Shared Device" to My sharing, then click **"Add sharing"**
(Note: the receiving sharing device cannot be shared again).
3. Click "👤 Jack jack@milight.com" to edit sharing, slide to left to delete sharing.



Mi·Light®

Instructions of setting output port rank

1. Connect the Mini WiFi controller to the power supply, then short press "OFF" key on remote-controller. to turn off the light.
2. Hold the "W" key on the remote-controller for 5s until the white light of the strip light flashing fast(It will exit automatically if there is no operation after 15s.)
3. Short press FLASH, STROBE.FADE,SMOOTH key to choose the corresponding strip light sequencing(Referencing the table below)
4. Set successfully (The white light of the strip light flashing fast for 1 second, then exits and enters the normal working mode).

Setting key	 RGB Controller	 RGBW Controller
FLASH	GRB(Default)	GBRW(Default)
STROBE	BRG	GRBW
FADE	RGB	RGBW
SMOOTH	GBR	WRGB