

# User Guide

## LD1080255 AC Triac Rotary Glass Panel Dimmer

The S1-K is an innovative AC phase-cut dimmer with both RF control and rotary manual control. The AC dimmer is designed with 100-240VAC wide input and output, 1 channel output, both triac dimmable and mosfet dimmable. The RF triac dimmer can be compatible with a variety of single color RF series remote controls. While working with a WiFi-Relay controller, the dimmer can be WiFi controlled via APP installed on IOS or Android system.

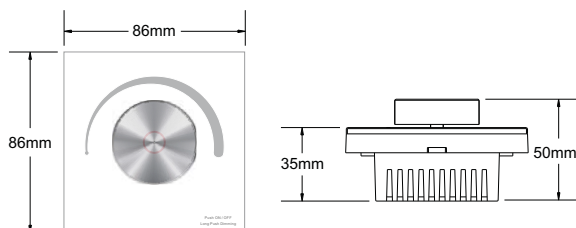
### Feature

- Rotary glass panel AC phase-cut dimmer, 1 channel output.
- To dim and switch single color dimmable LED lamps, traditional incandescent and halogen lights.
- Rotate knob to change brightness, support push and long push operation.
- Smooth dimming and switch without any flickering.
- Leading edge dimming or trailing edge dimming set by dip switch.
- Great compatibility with a variety of dimming RF remote.
- Adopt 2.4GHz wireless technology, remote distance up to 30m.
- Work with WiFi-relay controller after install APP on IOS and Android system.

### Technical parameter

- Input voltage: AC100-240V
- Output voltage: AC100-240V
- Output current: Max 1.2A
- Remote distance: 30m
- Work temperature: -30°C~55°C
- Product size: L86×W86×H50mm

### Dimension



### Match guide

There are two kinds of method to match the AC triac rotary panel dimmer with the RF remote (optional).

#### • Use Knob

1. Match: Turn on light, turn off, immediately push the knob for 5s, within 5s, press on/off key or zone key of the RF remote.
2. Delete: Turn on light, turn off, immediately push the knob for 10s, delete all matched RF remote.
3. Multiple zone RF remote only use zone key to match each zone receiver.

#### • Use Power-up

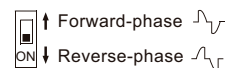
1. Match: Switch off the power, then switch on power again, short press on/off key or zone key 3 times on the RF remote quickly within 5s after power on, the link is done once the light blinks 3 times.
2. Delete: Switch off the power, then switch on power again, short press on/off key or zone key 5 times on the RF remote quickly within 5s after power on, the unlink is done once the light blinks 5 times.
3. Multiple zone remote only use zone key to match each zone receiver.

### Knob function

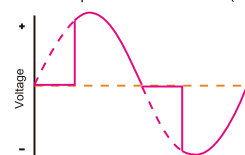
- **Push:** Turn on or off light. After turn on light:
- **Rotate:** Rotate knob to adjust brightness, 2.5 turns, 50 levels.
- **Long push(1-5s):** Continuous 256 levels brightness adjustment.

### Phase-cut selection

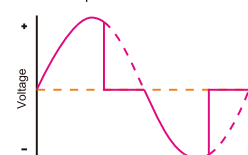
Select leading edge(forward-phase) dimmer or trailing edge(reverse-phase) dimmer according to dimmable LED light or driver.



Forward-phase control dimmer(TRIAC)



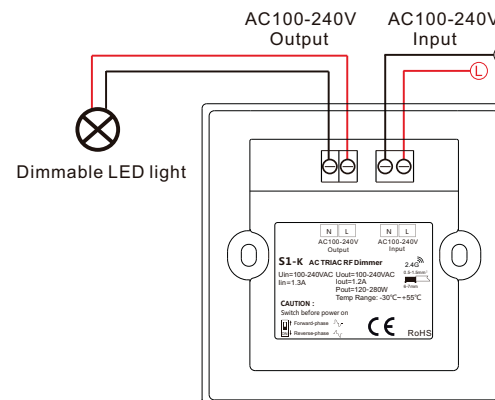
Reverse-phase control dimmer



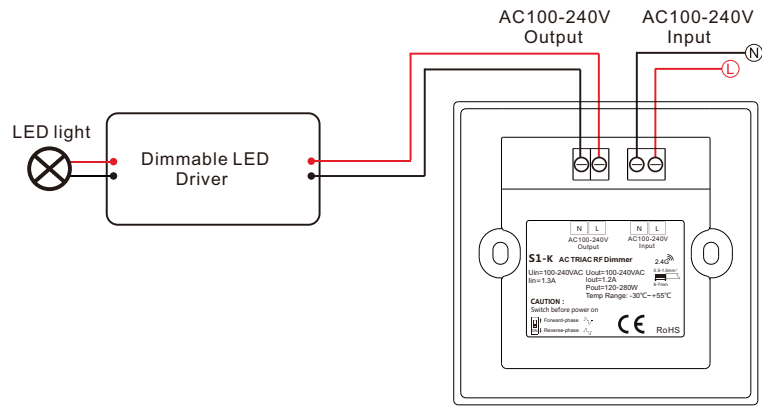
**Caution:** before power on, you must confirm the selection of dip switch.

### Wiring diagram

S1-K connect with dimmable LED light



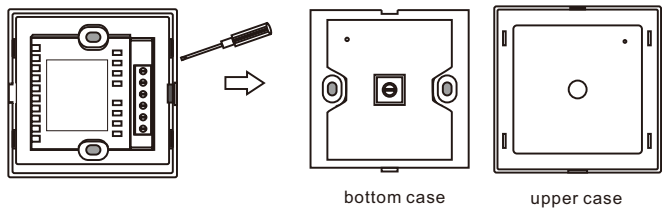
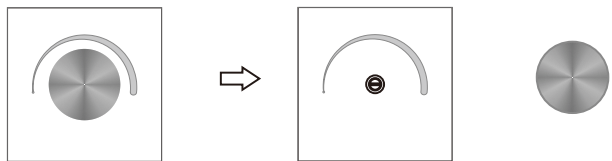
### S1-K connect with dimmable LED driver



**Note:** When calculating the maximum number of load lamps or drivers, the input power or input current parameters of a single lamp or driver must be used, the output power parameters can not be used, otherwise, the product will be overloaded and damaged.

## Installation diagram

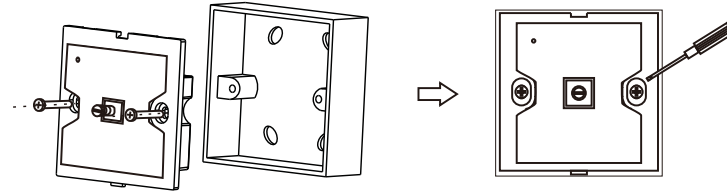
1. Remove the knob, then flip panel, inserted into the card edge aperture with a small screwdriver, gently pry and open the panel.



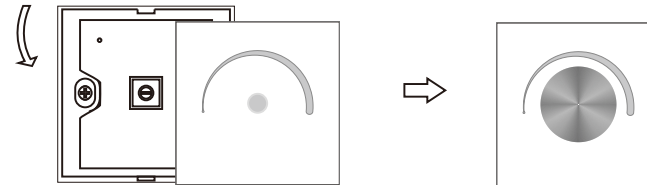
bottom case

upper case

2. After connect wires, put bottom case into 86 bottom box, put in the screw and tighten.



3. From top to bottom, moderately cover upper case, then mount knob, complete installation.



### NOTES:

- In order to ensure safety, turn off the power first before wiring, ensure correct wiring to avoid short circuit.
- In the process of installation, don't push the knob hardly, so as not to loose knob spindle and scratch panel.

## Malfunctions analysis & troubleshooting

Malfunctions	Causes	Troubleshooting
No light	1. No power. 2. Wrong connection or insecure.	1. Check the power. 2. Check the connection.
No response from the remote	1. The battery has no power. 2. Beyond controllable distance. 3. The controller did not match the remote.	1. Replace battery. 2. Reduce remote distance. 3. Re-match the remote.

## Safety information

1. The product shall be installed and serviced by a qualified person.
2. The product is non-waterproof. Please avoid the sun and rain.
3. Good heat dissipation will prolong the working life of the controller, Please ensure good ventilation.
4. Please check if the output voltage of any power supplies used comply with the working voltage of the product.
5. Ensure all wire connections and polarities are correct and secure before applying power to avoid any damages to the LED lights.
6. If a fault occurs please return the product to your supplier. Do not attempt to fix this product by yourself.