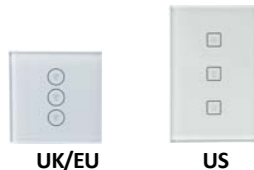


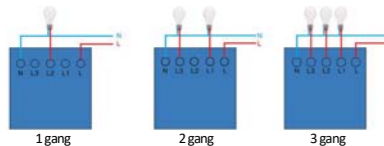
## Wifi Wall Switch User Manual



### Specification

Input voltage: AC110V ~ AC240V (50/60Hz)  
Max load: 800W/gang (resistive load)  
Input max current: 10A  
Standby consumption: 0.1mA  
Wireless type: Wi-Fi 2.4GHz

### Connection instruction



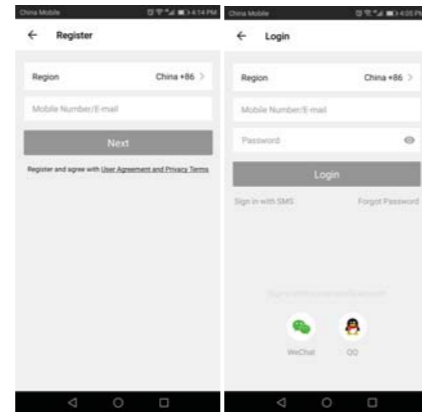
## How to connect device by APP

**Step 1:** Use your mobile phone to scan the QR code below or search "Smart Life" from Apple store or Google play to download APP.

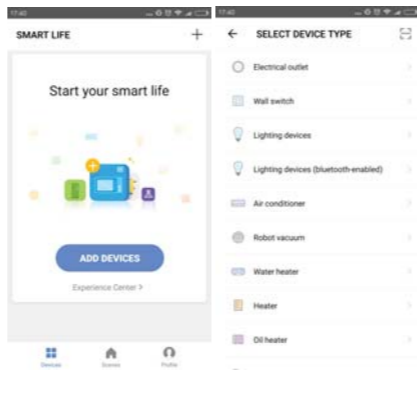


Input account name and password to log in. If you don't have an account, please register an account first. System will auto identify your country. You can also select country by yourself. You can use mobile phone number or Email address as your account name.

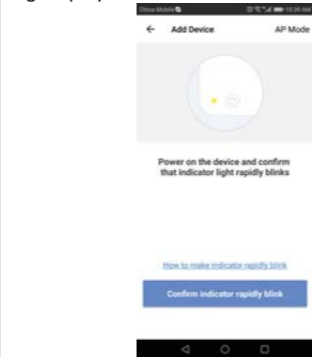
Click "Next" to get verification code from your mobile phone. Then input password. If using Email address as account name, please input password directly. Click "Confirm" to finish your registration.



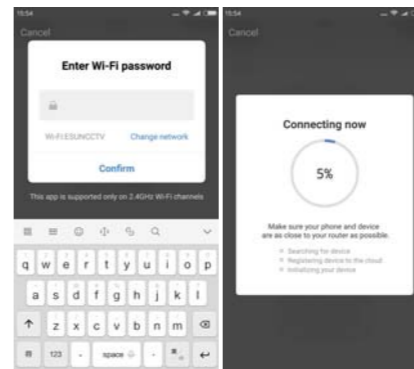
Make sure your mobile phone is connected to WiFi in your home. Click "Add Device" or click "+" on the upper right corner of the homepage and select "Wall switch" from the device type list.



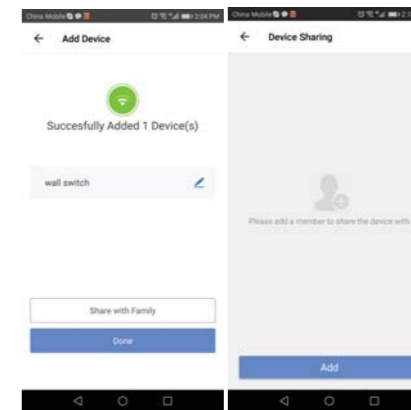
**Step 2:** Switch on power supply. The indicator light on the wall switch will blink rapidly. If not, keep pressing any lamp icon on the wall switch for about 20 seconds until the indicator light blinks. Fast flash of indicator light (2 times per second) means under fast mode and ready to connect. Slow flash of indicator light (1 time every 3 seconds) means under hot spot mode. Click "Confirm light rapidly blink" to continue.



**Step 3:** Select a network for your wifi wall switch and click "Confirm" to connect device.

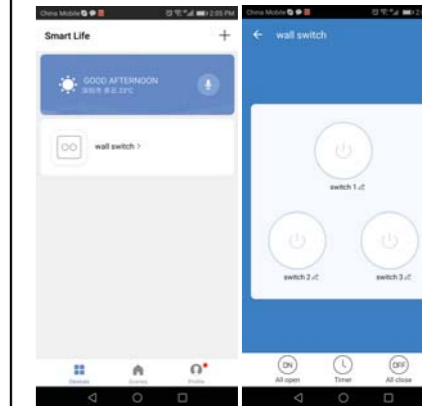


**Step 4:** After Smart Life added device successfully, you can rename the wall switch. And you can share the device with your family member.

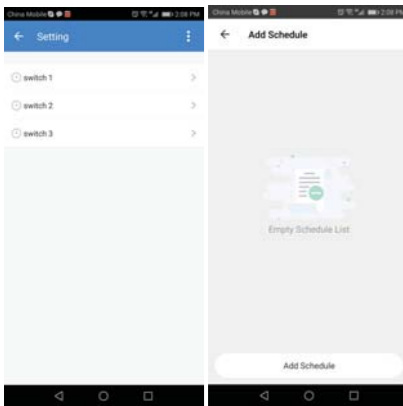


## How to set device

**Switch on/off:** Click the device name on the homepage (here is "wall switch") to enter device setting. You can switch on/off the device.

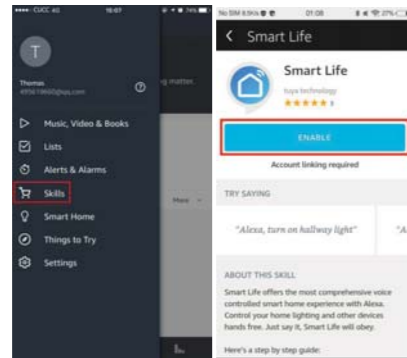


**Set timer:** You can set schedule to switch on / off your smart device.

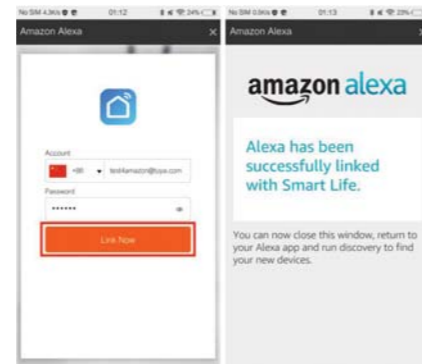


### How to control device by Amazon Alexa

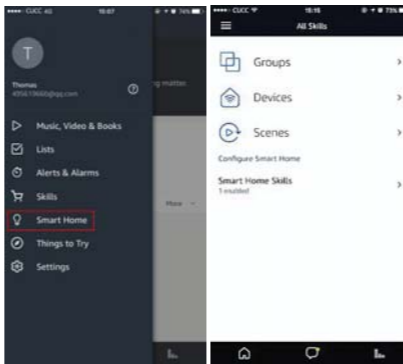
**Step 1:** Open the "Amazon Alexa" APP. Go to "Home" and select "Skills". Input "Smart Life" in the search bar. Click "Enable" to add the skill.



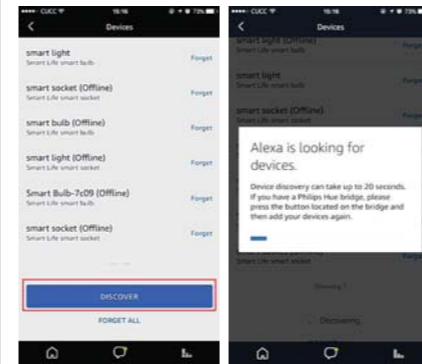
**Step 2:** Select your country code. Enter your "Smart Life" APP account name and password. Then click "Link Now" to continue. After the link succeeds, close the window back to Alexa APP.



**Step 3:** Click "Smart Home", select "Devices" and then press "Discover".



Alexa will discover devices. After about 20 seconds, the devices will show in the list.

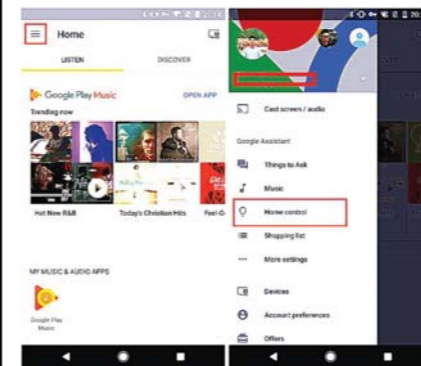


Now you can use your Alexa to voice control your Smart devices.

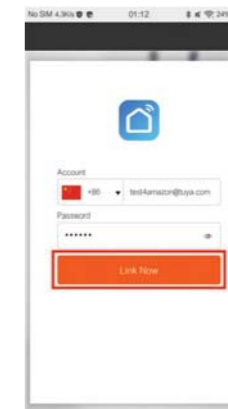
"Alexa, turn on/off xxx".

### How to control device by Google Home

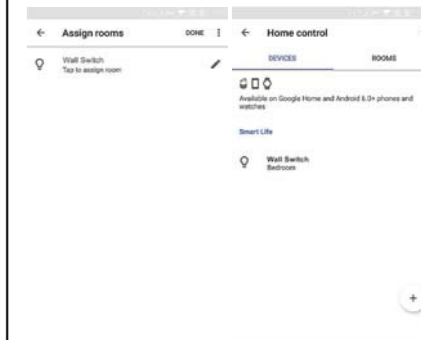
**Step 1:** Open the "Google Home" or "Google Assistant" APP. Go to "Home" and select "Home Control". Click "+" on the lower right corner to add skill. You can find "Smart Life" in "Add devices" list.



**Step 2:** Select your country code. Enter your "Smart Life" APP account name and password. Then click "Link Now" to continue.



**Step 3:** After the link succeeds, you can assign rooms for your smart devices. Later you can find the smart devices in the Home Control list.



Now you can use your Google Home to voice control your Smart devices.

"Ok, Google, turn on/off xxx".