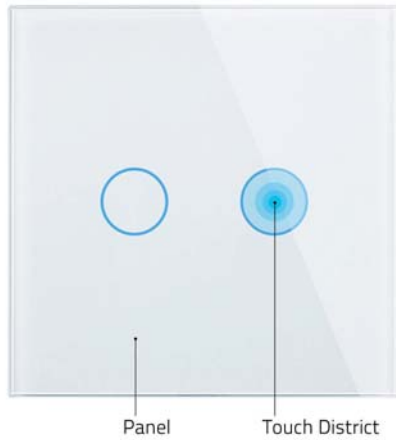
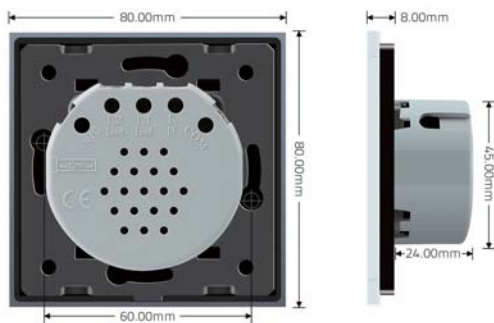


Curtain Switch Instruction

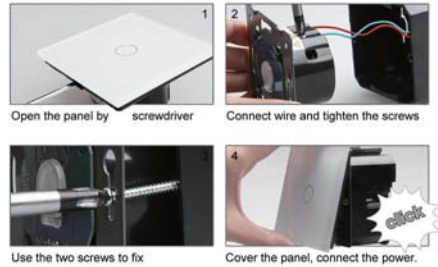


Products specification:

- 1.Dimension: 80mm*80mm*60mm
- 2.Material: Crystal Glass Panel
- 3.Decorative frame: Silver-gilt
- 4.Panel color: White
- 5.Operating Voltage: AC220V-250V
- 6.Electrical Current: 5A/Load
- 7.Total Rated Load: 2000W
- 8.Operating Environment: -30~70 Centigrade; Less than 95%RH
- 9.Lifelong: 100,000 Times of Operation



Installation Diagram:



Operation:

- 1.Press Left button,the motor will rolling up.
If you want to stop press the Left button again.
- 2.Press Right button,the motor will rolling down.
If you want to stop press the Right button again.

Warning:

- 1.Please shut down power before installation and dismantlement
- 2.Over loading is forbidden
- 3.Mount box should be standard "80" style and the dimensions at least 75mmx75mmx35mm

The Wiring Diagram of Curtain Switch:

